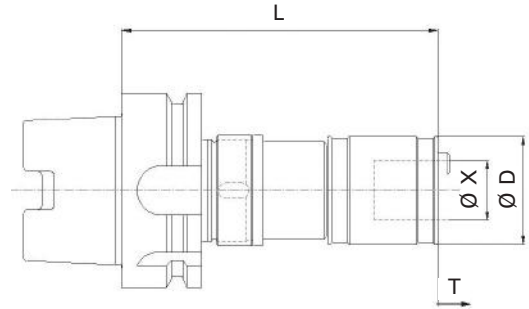
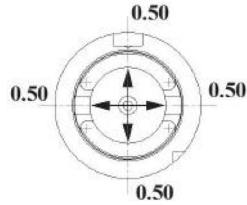


## Mandrino a compensazione assiale in trazione con flottamento radiale

Quick-change tapping chuck with compensation in compression and tension with radial parallel float

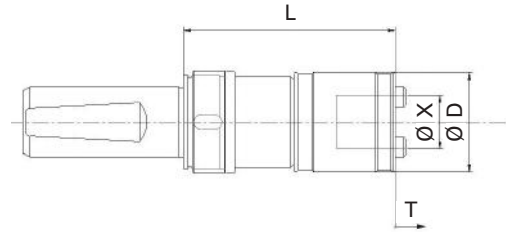
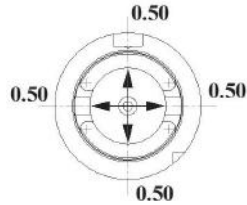
RADIAL PARALLEL FLOAT



### HSK DIN 69893A

CODICE / ITEM	TIPO CAPACITÀ	ATTACCO	L	ØX	ØD	T	R
HSKA63A-TLTP1-L103	M3-M12	HSK63	103	19	35	7,50	0,50

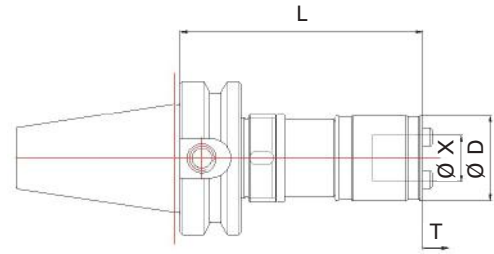
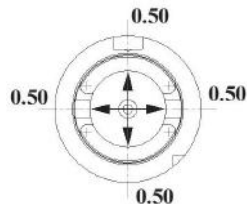
RADIAL PARALLEL FLOAT



### DIN 1835 B+E

CODICE / ITEM	TIPO CAPACITÀ	ATTACCO	L	ØX	ØD	T	R
WSE25-TLTP1-L75	M3-M12	25BE	75	19	35	7,50	0,50

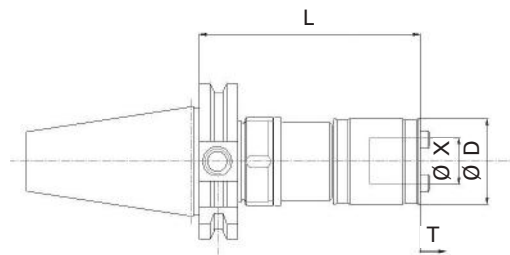
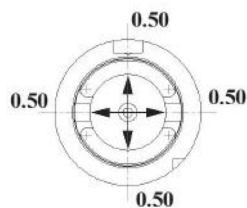
RADIAL PARALLEL FLOAT



### BT

CODICE / ITEM	TIPO CAPACITÀ	ATTACCO	L	ØX	ØD	T	R
BT30-TLTP1-L100	1 - M3÷M12	ISO 30	100	19	32	7,50	0,50
BT40-TLTP1-L100	1 - M3÷M12	ISO 40	100	19	32	7,50	0,50

RADIAL PARALLEL FLOAT



### DIN 69871/A

CODICE / ITEM	TIPO CAPACITÀ	ATTACCO	L	ØX	ØD	T	R
TC30-TLTP1-L100	1 - M3÷M12	ISO 30	100	19	32	7,50	0,50
TC40-TLTP1-L100	1 - M3÷M12	ISO 40	100	19	32	7,50	0,50